

# Regionews

VOLUME 26 ISSUE 1

FIRST QUARTER, 2009

[www.egacarolinas.org](http://www.egacarolinas.org)

*Mission: To stimulate appreciation for and celebrate the heritage of embroidery by advancing the highest standards of excellence in its practice through education, exhibition, preservation, collection, and research.*



## REGION DIRECTOR NOTES KATRINA LAWRIKORE

The last few weeks of chilly evenings have been made for snuggling into a favorite chair and stitching. I hope everyone has been able to indulge in our favorite activity recently.

I would love to hear from any chapters that were involved in “Stitch in Public Day”, both positive and negative feedback. This can be such an important recruiting tool for new members. I am most interested in hearing how it went and what both the region and national can do to improve things for next year.

Our 2009 Stitchin’ on the Ridge Region Seminar promises to be better than ever. This year we are particularly fortunate to have Carol Dam, the national EGA President joining us for our region meeting. While family obligations will keep her from staying for the entire weekend, there should be plenty of time on Friday for both formal and informal discussions with Carol about EGA and what we can all do for this special organization of ours. As always the seminar will be noted for its beautiful location, great classes, no cooking, time with friends, and the ever popular Merchandise Night and Bookstore, both guaranteed to help us add to our stashes. Registration is going well and I hope to see many of you at Ridgecrest in late May.

About the time you receive this I will be attending the EGA national board meeting in Louisville. I’m sure I’ll have lots of information for everyone when we all gather at Ridgecrest for our Region meeting and seminar.

Until then, grab every moment you can for stitching! Thank you for all you do for our EGA.

Katrina Lawrimore  
Region Director

## BYLAWS REVIEW COMPLETE!

All of the Carolinas Region chapters have completed their bylaws review. Thank you and congratulations to all the officers and other members who worked on bringing these important documents up to date. You can rest on your laurels as the next regular review for our region is not until 2018.

## Inside this issue:

RD report	1
2009 Region Challenge	2
Community Outreach	2
Elected Officers	3
Cress Scholarship info	4
Calendar	5
Region and National info	7
Award info	8-9

## REGIONEWS

### 2009 REGION CHALLENGE

The theme for our region challenge for 2009 is Wild n' Wacky. Every member of Carolinas Region is invited to enter the challenge. You may use any technique(s) of your choice. The design must be your own original design.

You do not have to be present to participate. You may send your entry with a friend who is attending seminar. You will have to complete the paperwork in advance and send it with your entry.

You are limited to a single entry. However, if your entry has more than one piece in it, that is acceptable. For example: a jewelry ensemble of earrings, necklace and bracelet or a wall hanging or stitched design that is made in the form of a triptych.

All work is to be anonymous for voting purposes. Do not have your name prominently located on the front of the work.

All entrants are encouraged to send an artist's statement along with their entry. If you have never written an artist's statement, it is fairly easy. For this challenge, all you need to do is describe in 50 words or less what your entry is about: explain how it is Wild n' Wacky. Do not include your name on the statement, but do include the name of your piece.

If you are interested in entering the challenge, you may contact me, Diane Stavola, at dhs1836@cox.net or at 1836 Greenwood Rd SW, Roanoke, VA 24015-2820. Let me know of your intent to enter the challenge and I will send you a copy of the required forms.

If you intend to apply for EGA insurance coverage, I must have the forms returned to me by May 15, 2009. Remember EGA has a \$250 deductible for the insurance.



### Community Outreach

Hello fellow Carolinas Region members! Community Outreach projects are going strong in our region. Aiken Stitchin' Belles completed sixty Kissing Pillows for our troops. The Chapter was also recognized as a volunteer contributor in the Cuddle Buddy project at the New Child Advocacy Center. They continue to make lap robes and fingerless gloves for local nursing homes. The Augusta Chapter had a recent successful Outreach day completing gowns, breavement bags and blankets for a local Neonatal ICU. Classes have also been completed at local libraries for adults and youth. Members continue to stitch samplers for Habitat Homes. The Blue Ridge Chapter participated in the National Stitch in Public Day on February 7. In Charlotte the local EGA chapter continue to work with local Girl Scouts as well as making book marks for the battered women and childrens shelter. The Chicora Chapter in Myrtle Beach continue stitching for Habitat Homes. The Florence Chapter participated in National Stitch in Public Day. In North Carolina the Tryon Chapter continues their work with a local Hospice Unit. As you can see we are busy with Outreach throughout the Region. I really enjoy receiving your newsletters. Keep up the good work!  
Happy Stitching!  
Janine Bangs

## ELECTED OFFICERS

### *Region Director \**

Katrina Lawrimore  
213 Queen Street  
Georgetown, SC 29440  
843-546-5438  
katrinalawrimore@verizon.net  
Chicora Stitchers Chapter

### *Assistant Region Director \**

Michelle Burroughs  
P.O. Box 635  
Grovetown, GA 30813  
706-863-5159  
critters01@bellsouth.net  
Augusta Chapter

### *Treasurer \**

Diane Stavola  
1836 Greenwood Rd., SW  
Roanoke, VA 24015  
540-345-0010  
dhs1836@cox.net  
Blue Ridge Chapter

### *Secretary*

Sydney Mace  
1075 Maplewood Court  
Hendersonville, NC  
28791  
828-808-0524  
sydneymace@yahoo.com  
Laurel Chapter

### *Education Coordinator*

Karla Gee  
3927 Cravens Creek  
Road  
Roanoke, VA 24108  
540-725-5704  
minervaswears@aol.com  
Blue Ridge Chapter

\*indicates update/correction



## COMMITTEES

### *Bylaws/*

\* Sydney Mace  
see under Secretary

### *Community Outreach*

Janine Bangs  
1117 Walden Glen Lane  
Evans, GA 30809  
706-863-3908  
rnhelp@knology.net  
Augusta Chapter

### *Historian*

Ann Blalock  
181 Providence Square Drive  
Charlotte, NC 28270  
704-365-0096  
anndfa@aol.com  
Charlotte Chapter

### *Membership*

Susanne Osterberg  
611 East Park Place  
Hendersonville, NC 28791  
828-697-8198  
osterbed@bellsouth.net  
Laurel Chapter

### *RegioNews*

Sallie Folk, Editor  
422 West Pine Street  
Florence, SC 29501  
[sbfolk@yahoo.com](mailto:sbfolk@yahoo.com)  
Florence Area Chapter

### *Website Coordinator*

Sydney Mace  
see under Secretary  
[webmaster@yahoo.com](mailto:webmaster@yahoo.com)

### *Nominating Committee*

Terry Belanger (2007-2008)  
218 Midway Drive  
Pawleys Island, SC 29585  
843-237-7477  
[tabsc@aol.com](mailto:tabsc@aol.com)  
Chicora Stitchers Chapter

Ann Blalock (2007-2009)  
see under Historian  
Brenda Decker(2008-2010)  
108 Kenwood Drive  
Hendersonville, NC 28739  
828-693-9724  
[Brendee\\_nc@yahoo.com](mailto:Brendee_nc@yahoo.com)  
Laurel Chapter

## NEWSLETTER INFORMATION

The Carolinas Region, EGA, publishes *RegioNews* quarterly. Standard practice is to distribute it to all chapter presidents, region representatives, and newsletter editors in the Carolinas Region. It is also available free to all region members

through the region website in the section "members only".

**Chapter newsletter editors:** Remember to share information from this newsletter with your members through your chapter newsletter.

Advertising is accepted for 1-year (4 issues) intervals at various

rates. Contact assistant editor Sydney Mace for details (see page 1 for contact information).

Subscriptions are \$6.00 a year. Send requests and checks, payable to

**Carolinas Region EGA**, to the *RegioNews* editor Sallie Folk (see page 1 for address). All EGA chapters have

### **Reprint information:**

All EGA chapters have permission to reprint any material found herein except items that are marked with a copyright notice.

## REGIONEWS

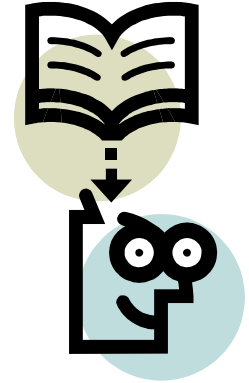
### REGION EDUCATION SCHOLARSHIP (CRESS)

Please encourage your chapter members to apply for this scholarship which is available to any region member.

CRESS supplies \$200.00 towards the cost of a class for embroidery study (excluding EGA region and national seminars).

To apply, write an essay including the title of the class chosen, why you would like to take the class, and the benefits you could share with other members of the region. Scholarship winners must describe what they learn in an article to *RegioNews*, offer a workshop at a region meeting teaching others from the information they received or be willing to informally present a display at the region meeting/ seminar.

The application deadline, with essay, is May 1, 2009. It should be sent to Assistant Region Director Michelle Burroughs – see pg 1 for contact information.



### 2010 Stitched Logo Contest Deadline Approaching

The 2010 Stitching on the Barbary Coast, EGA National Seminar Committee is looking forward to choosing the best crafted and most exciting stitchery representing our gorgeous, historic corset logo. The days are counting down to judging, and the deadline to receive your entry is April 1, 2009.....just weeks away!

Please send your stitching to:

Melinda Rolfe  
PO Box 2080  
Los Gatos, CA 95031-2080

Instructions for the contest, the logo to print as a pattern and how to ship is available on the EGA website. We hope to see YOUR entry on judging day!

Mike Swan, Chair

### **EGA Chapter Reporting Requirements**

**ATTN: Chapter presidents, region reps, and editors:** *it is your responsibility to be sure your membership officer, secretary and treasurer know when and where to send these items.*

WHAT	WHEN	WHERE
Minutes of board and general meetings (unless included in the chapter's newsletter)	Within the month	Region Director
Membership roster	By January 15	Region Director
		Region Membership Chair
National dues and membership information, quarterly	By January 15, April 15, July 15, October 15	National Office
Region dues and membership information, quarterly	Same time as sent to National	Region Treasurer
Chapter Newsletters	When sent to members	Region Director
		Assistant Region Director
		EGA Newsletter Reviewer
		<i>RegionNews</i> Editor
		Outreach Chair
EGA Chapter Officer Change list (EGA Form)	Within 2 weeks of election	Region Secretary
Education questions/information	As needed	Region Education Coordinator
Annual chapter report	By December 15	Region Director
Annual financial report	By February 15	Region Director
		EGA Treasurer

### **CALENDAR**

#### **Carolinas Region**

May 29-31, 2009 Ridgecrest, NC	Region Seminar;	May 1, 2009	Nomination deadline for Gold Thread Award
June 3-6, 2010 Ridgecrest, NC	Region Seminar;		
May 1, 2009	CRESS application deadline	May 31, 2009	Application deadline for EGA Research Fel- lowship Program

#### **National Awards/Scholarships/Grants/ Challenge**

April 1, 2009	Application deadline for Mary-Dick Digges Scholarship
April 2, 2009	Application deadline for Penny Evans Me- morial Scholarship
April 14, 2009	Application deadline for Marjorie Jones Scholarship
May 1, 2009	Nomination deadline for Gold Thread Award
May 31, 2009	Application deadline for EGA Research Fel- lowship Program

#### **National Seminar**

Oct. 2-9, 2009	<i>Bridges to Stitching</i> , Pittsburgh, PA; Mid- Eastern Region, host.
Sept. 5-10, 2010	San Francisco, CA; Greater Pacific Re- gion, host.
Sept. 10-16, 2011	Naples, FL; Sun Re- gion, host

#### **International Embroidery Conference**

Sept. 8-10, 2011	Naples, FL
------------------	------------

---

## REGIONEWS

### Correspondences Courses and Independent Study

Education Coordinator

**Have you noticed?** EGA has changed the name from **Group Correspondence Course** to **Correspondence Course** and **Individual Correspondence Course** to **Independent Study**. Same thing, but a name that more accurately reflects the purpose and the participant. With a CC, anyone may take the course. The number taking it can be from 1 person to 22 people. One person can take it if they are willing to pay the \$150 fee for the course. The IS really is more in-depth study on an individual basis and is meant to augment what you have learned from a CC or workshop.

**Thank You:**

A big thank you to all who participate in the CAR sponsored EGA Correspondence Courses in 2008. We would like to congratulate those who submitted their pieces for evaluation.

**Beaded Nutcrackers:** Carolyn Braly Glenda Stenbuck,

**Swiss Sampler:** Linda Eason, Belinda Ebert, Mary Gowan, Sue Gross, Carole Overton, Ruth Sell,

I look forward to the new submissions for this year's CCs. If you wish to have this year's Correspondence Course piece evaluated, please send your work to me (**NOT THE TEACHER**). It should be mailed as instructed and post marked by the following dates:

**My Favorite Bracelet.....4/10/09**

**Morning Glories.....6/12/09**

**Hummingbird& Honeysuckle...7/13/09**

### Fall Mini-retreat

Plans are underway again for our mini-retreat. **SAVE THE DATE**; Oct. 23- 25, Hilton Garden Inn, Rock Hill, SC. Some bonus events are in the works. You won't want to miss it!

## MEMBER NEWS

The Carolinas Region EGA extends its sympathy to the family and friends of Gail Marsh, late of Gifted Hands Chapter, on her recent passing. Donations may be made to Duke Hospice, at 4321 Medical Park Dr. Suite 101 Durham, NC 27704 or to Susan G. Komen for the Cure NC Triangle, at 2314 S. Miami Blvd. Durham, NC 27703.

## CHAPTER OFFICERS DIRECTORY

The presidents, region representatives, and newsletter editors of the Carolina Region chapters are listed in a directory that has been posted to the region website in the members area. Please contact Sydney Mace at [sydneymace@yahoo.com](mailto:sydneymace@yahoo.com) if corrections should be made.

## 2009 REGION SEMINAR

Region Seminar will be held May 29-31, 2009 at Ridgecrest. Brochures have been mailed with all of the particulars, as well as pictures of the pieces offered for classes. I hope you will check your calendar and reserve this time in the spring to enjoy the beautiful mountains of North Carolina while having a great time with fellow stitchers and talented teachers. We will be offering studio time again for those stitchers wishing to just get away and work on some “UFO’s”.

We are making arrangements to have the sales of the tickets for the opportunity baskets begin at the local levels prior to Seminar. This will allow members unable to attend the meeting to still have a chance to win one of these baskets as well as generate more monies for the individual chapters. Remember ALL of the proceeds from the ticket sales will be returned to the contributing chapters.

Make your reservations for classes early and save! There will be a discounted rate for early registration this year. We expect the classes to fill quickly, so don't wait for the last minute.

Members are asked to contact Chris Sloan about a display we will be putting together for the Seminar. Any member may submit up to three completed piece from previous years Region Seminar classes at Ridgecrest. These pieces will be displayed in the studio time room for the duration of the Seminar. This is a good excuse to get out one of those pieces you really liked but never got back to and finish it to bring along for the display.

As you can see there will be several changes this year to make your Seminar even better than in the past. We hope to see all of you in the spring at Ridgecrest.

Michelle

## REGION SEMINAR BROCHURE ON WEBSITE

The 2009 seminar brochure is available on the Carolinas Region website, along with a page of the projects in color and a downloadable registration form.

## EGA WEBSITE - MEMBERS ONLY LOGIN

Are your chapter members having trouble logging on to the "Members Only" are of the EGA website? Here's an idea that might help. Print out the login information on 2"x4" address labels. Affix the labels to brightly colored 3"x5" index cards. Give a card to your members to keep handy by their computers. Contact Sydney Mace at [sydneymace@yahoo.com](mailto:sydneymace@yahoo.com) to obtain the label template.

---

## REGIONEWS

### National Awards, Scholarships/Grants/ Challenge

I hope everyone will consider these opportunities. We've had many from our region receive these awards and opportunities. You can find a complete list and descriptions at EGA web site [http://www.egausa.org/html/scholarships\\_awards.html](http://www.egausa.org/html/scholarships_awards.html).

Please note deadlines and Descriptions:

#### **Scholarships:**

##### **Judith and Susan Richardson Initial Steps Toward Teaching Certification Scholarship**

- A scholarship to take EGA Teacher Certification in the technique of your choice.
- Benefits teacher certification candidates in the EGA Teaching Certification Program seeking their first EGA certification.

[Scholarship Information and Application](#)

Due Date: Applications are accepted as soon as the candidate has completed the screening process

##### **Mary-Dick Digges Scholarship**

- For the study of surface embroidery, defined as crewel embroidery, Japanese embroidery, and stumpwork.
- Awarded by the Education Department

[Download Scholarship information](#)

- **Due Date: April 1, 2009**

Recipient notified by: May 1, 2009

##### **Genny Morrow Memorial Scholarship**

- Scholarship awarded to an EGA national seminar attendee for use at the next year's national seminar
- Awarded by the Board of Directors
- Award is \$200 for one four-day or two two-day classes or \$100 for one two-day canvas class.

Information is available at each national seminar

##### **Penny Evans Memorial Scholarship**

For EGA members for an embroidery related class, study project, or similar education offering by EGA, The Royal School of Needlework, or the City and Guilds of London Institute, in the U.S. or the U.K.

Awarded by the Scholarship Review Committee

[Download Scholarship Application](#) (pdf)

[Apply online](#)

**Due date: April 1, 2009**

Recipient notified by: May 1, 2009

---

#### **Attention Membership Chairmen and Treasurers: New Dues Structure**

If you are responsible for determining the dues payments in your chapter, please send your email to me ASAP. I will be contacting each chapter to help navigate the new structure that begins with the First Quarter payments in 2009. My email address is: [dhs1836@cox.net](mailto:dhs1836@cox.net)

Thank you!  
Diane Stavola  
CAR Treasurer

---



## National Awards, Scholarships/Grants/ Challenge Continued

### Scholarships available

- **For specifically designated scholarships**  
Awarded by the Scholarship Review committee  
Designated Scholarship

- **Marjorie Jones Scholarship** – will be awarded to benefit students of crewel embroidery taking a crewel class at EGA's National Seminar  
[Apply online](#)

o **Due Date: April 15, 2009**

Recipient notified by May 15, 2009

### Research Fellowship Grant Award

- Applicants need not be members of EGA
- Awarded for in-depth research in all areas of embroidery and allied textile arts, and to create a basis for dialogue between EGA and other grant and research institutions.
- Grants of up to \$1,000 are awarded annually.

[Scholarship Application](#)

- **Due Date: May 31, 2008**

### Awards

#### **Bobby Pilling Memorial Award**

- This annual award, established to honor a treasure of EGA, a longtime supporter and former national president, Barbara (Bobby) Pilling, is presented to an EGA member for an original piece of needlework that "goes outside the lines."

[Download Award information](#)

- **Due Date: May 5, 2009** (please note correction of due date from last newsletter)

Send entries to EGA Headquarters)

#### **Gold Thread Award**

This annual award recognizes those individual who, on a loyal and/or regional level, have given freely of their time and talents to best exemplify the purpose of the organization: *to foster the highest standards of excellence in the practice of the art of embroidery through an active program of education and study.*

We encourage each of you to go back to our chapters and nominate a deserving member for 2009. Do it now, don't wait until the May 1, 2009 deadline. Use the online nomination form.

[Award information](#)

[Online Nomination Form](#)

**Due Date: May 1, 2009**

---

First Class Mail

## Toshiba

Primary Business Address  
Your Address Line 2  
Your Address Line 3  
Your Address Line 4I

[www.egacarolinas.org](http://www.egacarolinas.org)

Your business tag line here.

### REGION DUES PAYMENTS

Region dues payments and membership information should be directed to the Carolinas Region treasurer:

Diane Stavola  
1836 Greenwood Rd., SW  
Roanoke, VA 24015

Please ensure that your chapter treasurer and membership officer are aware of this information.

Dues are \$4.00 per member.

### **NEWSLETTER INFORMATION**

The Carolinas Region, EGA, publishes *RegioNews* quarterly. Standard practice is to distribute it to all chapter presidents, region representatives, and newsletter editors in the Carolinas Region. It is also available free to all region members through the region website in the section “members only”.

**Chapter newsletter editors:** Remember to share information from this newsletter with your members through your chapter newsletter.

Advertising is accepted for 1-year (4 issues) intervals at various rates. Contact assistant editor Sydney Mace for details (see page 1 for contact information).

Subscriptions are \$6.00 a year. Send requests and checks, payable to **Carolinas Region EGA**, to the *RegioNews* editor Sallie Folk (see page 1 for address).

All EGA chapters have permission to reprint any material found herein except items that are marked with a copyright notice.