

# Regionews

VOLIME 30

4TH QUARTER, 2013

[www.egacarolinas.org](http://www.egacarolinas.org)

*Mission: To stimulate appreciation for and celebrate the heritage of embroidery by advancing the highest standards of excellence in its practice through education, exhibition, preservation, collection, and research.*

## RD Elizabeth Little

Greetings from your Region Director.

October was a great stitching month for me. First, it was National Seminar in Louisville. I went early for the Board of Directors' meeting. While those were fairly intense meetings, the discussions yielded some good suggestions that could be easily implemented. The sneak peek of the 2014 seminar pieces was amazing. As usual, the pictures do not give justice to the stitched piece. I wish everyone could have seen the pieces in person.

Next was the Gary Clarke class in Rock Hill. Boy was I out of my stitching comfort zone. I am a dedicated counted thread stitcher. Layering fabrics and free-hand stitching proved to be an interesting but challenging change of stitching. I learned some great skills that I can draw on for later projects. All the participants enjoyed the class. We are already looking forward to the next International Teachers Tour. More information will follow once National releases the details.

On the heels of Gary's class was Fall Retreat. While I opted for Studio Time, it was great to see fellow stitchers and be inspired by their latest works. The fall board meeting capped off the weekend with the business meeting and elections. Janet, Julia, Michelle, Kathryn, and I look forward to serving you for the next three years. Please do not hesitate to let me know if there is anything I can do to help make EGA better for you or your chapter.

As Region Director, one of my goals is to personally visit each chapter during my term. With the holidays (and tax season) soon upon us, it will be spring until I can begin this project. If there is any aspect of EGA you would like me to discuss while at your chapter, please let me know and I will be happy to present it.

Wishing each of you the happiest of holiday seasons. Take a little time to stitch. It does soothe the stress.

Elizabeth Little



### Inside this issue:

RD report,	1
Officers, calendar, information	2-3
Region Challenge and Display, ARD, Upcoming stitching opportunity	4-5
National exhibit information	6-7
Education	8

## ELECTED OFFICERS

### *Region Director*

Elizabeth Little  
20668 Old Aquadale Road  
Albemarle, NC 28001  
704-982-7119 (w)  
[elizabethlittle@live.com](mailto:elizabethlittle@live.com)  
Golden Needles

### *Treasurer*

Michelle Burroughs  
PO Box 635  
Grovetown, GA 30813  
706-863-5159  
[criters01@bellsouth.net](mailto:criters01@bellsouth.net)  
Augusta

### *Education Coordinator*

Kathryn F.  
127 Village Green Trail  
Garner, NC 27529  
919-795-9860  
[Keduck67@yahoo.com](mailto:Keduck67@yahoo.com)  
Cardinal

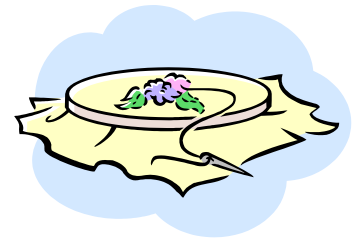
### *Assistant Region Director*

Janet Noble  
1391 Ridge Road  
Hopkins, SC 29061  
(H) 803-783-0239  
[rnoble@sc.rr.com](mailto:rnoble@sc.rr.com)  
Millwood

### *Secretary*

Julia Tyson  
PO Box 757  
Hartsville, SC 29551  
[juliatison@bellsouth.net](mailto:juliatison@bellsouth.net)  
Florence Area

EGA National Headquarters  
1355 Bardstown Road Suite  
157, Louisville, KY 40204  
502-589-6956  
Fax: 502-584-7900



## COMMITTEES

### *Bylaws*

See Education Coordinator

### *Community Outreach*

Linda Morrison  
10481 Lancaster Road  
Bent Mountain, VA 24059  
540-798-3720  
[allicem@aol.com](mailto:allicem@aol.com)  
Susan Hughes

### *Historian*

### *RegioNews*

Sallie Folk, Editor  
422 West Pine Street  
Florence, SC 29501  
[sbfolk@yahoo.com](mailto:sbfolk@yahoo.com)  
Florence Area

### *Website Coordinator*

Cathie Barker  
1735 Shano Drive  
Hendersonville, NC  
[cathiebeads@gmail.com](mailto:cathiebeads@gmail.com)

### *Nominating Committee*

Angie Fittro (2011-2014)  
1664 Harry Byrd Hwy.  
Darlington, SC 29532  
843-639-0626  
[pseudorcalover@yahoo.com](mailto:pseudorcalover@yahoo.com)  
Florence Area

Rosemary Kostansek

Cindy Valentine

## NEWSLETTER INFORMATION

The Carolinas Region, EGA, publishes *RegioNews* quarterly. Standard practice is to distribute it to all chapter presidents, region representatives, and newsletter editors in the Carolinas Region. It is also available free to all region members

through the region website in the section "members only".

**Chapter newsletter editors:** Remember to share information from this newsletter with your members through your chapter newsletter.

Advertising is accepted for 1-year (4 issues) intervals at \$10/year.

Contact editor Sallie Folk for details. Subscriptions are \$6.00 a year. Send requests to the *RegioNews* editor Sallie Folk and checks, payable to **Carolinas Region EGA**, to Michelle Burroughs, treasurer of Carolinas Region.

### **Reprint information:**

All EGA chapters have permission to reprint any material found herein except items that are marked with a copyright notice.

### ***EGA Chapter Reporting Requirements***

***ATTN: Chapter presidents, region reps, and editors:** it is your responsibility to be sure your membership officer, secretary and treasurer know when and where to send these items.*

WHAT	WHEN	WHERE
Minutes of board and general meetings (unless included in the chapter's newsletter)	Within the month	Region Director
Membership roster	By January 15	Region Director
National dues and membership information	May 31	National Office
Region dues and membership information	May 31	Region Treasurer
Chapter Newsletters	When sent to members	Region Director
		Assistant Region Director
		EGA Newsletter Reviewer
		<i>RegionNews</i> Editor
		Outreach Chair
EGA Chapter Officer Change list (EGA Form)	Within 2 weeks of election	Region Secretary
Education questions/information	As needed	Region Education Coordinator
Annual chapter report	By December 15	Region Director
Annual financial report	By February 15	Region Director
		EGA Treasurer

## CALENDAR

### Carolinas Region

September 26-28, 2014    Fall retreat,  
Rock Hill, SC

May 30 - June 1, 2014    Stitchin on the Ridge,  
Ridgecrest



## 2014 Stitchin' on the Ridge Exhibit

Ed Ops and Studio Time pieces will be the theme for the exhibit at Stitchin' on the Ridge 2014.

What are Ed Ops? These are the educational opportunity classes offered at Rock Hill during Fall Retreat. Can't remember what which classes qualify? If you pieces from any of the classes listed below, dig out your project (and finish if necessary) and bring it with you to Stitchin' on the Ridge 2014. In class at Rock Hill or at a chapter meeting doesn't matter. We want to see your creations.

2008 – Button Lariat Name Tag – Sherri Hagar

2009 – Hugs and Kisses Bracelet – Diane Stavola

2010 – Autumn Keepsake Basket – Cathie Barker

2011 – Ort Keep – Evelyn Riggins

2012 – Button, Button, Who's Got the Button Bracelet – Sue Osterberg

2013 – Fabric Ort Holder – Janet Noble

Now that you've been reminded of the Ed Ops, what about those Studio Time pieces? You indulged our oohs and ahhs as we peeked over your shoulder to see what project had caught your attention for that point in the weekend. Well, we want to see the finished product that is sure to knock our socks off. Any project that you worked on during Studio Time at EITHER Stitchin' on the Ridge or Fall Retreat (or both) qualifies.

Now, for the tough part of deciding what to show case. Each stitcher is limited to any combination of 3 pieces for the exhibit. All items must be ready to exhibit; pictures must be framed or mounted, and ready to hang. Please use wire hangers. Be sure to attach your name for identification purposes, and provide a card listing name of the piece, the designer, & your name.

If you have questions, contact the seminar exhibit coordinator, Angie Fittro, [psuedocalover@yahoo.com](mailto:psuedocalover@yahoo.com)

## Carolinas Region EGA Challenge 2014

Create an original design that relates to or is inspired by the theme "Aprons." The design can be any size and any medium that uses a threaded needle. A set or series counts as one entry. For instance, if you embroidered a set consisting of mother's apron and baby's bib with the same theme, they would count as one entry.

An **apron** is defined as an outer protective garment that covers primarily the front of the body. It is worn over clothing to protect from food, dirt, or excessive wear. An apron is usually held in place by two ribbon-like strips of cloth that are tied at the back. There are many different apron styles depending on the purpose of the apron. A basic distinction is between waist aprons which cover the body from the waist down and bib aprons which partly cover the upper part of the body. A pinafore is a decorative apron. All of these types of aprons as well as depictions of aprons or parts of aprons qualify for this challenge.

Completed pieces will be exhibited at the Carolinas Region Seminar in 2014, and ribbons will be awarded for Teacher's Choices and Viewers' Choice. Limit one entry per person and one entry per group (each group participant may also enter one individual project).

If you wish to enter, please complete the EGA Exhibit form on the next page. If you choose to assign a value to your item, your work will be covered by EGA insurance (with a \$250 deductible for the entire exhibit). If you don't want insurance, you must complete and sign the form at the bottom. Scan and email or print and send via postal mail by May 15, 2014 to the challenge exhibit coordinator at the address given on the form.

If you have any questions, please contact me. I look forward to seeing your work in the Carolinas Region Challenge Exhibit at Ridgecrest in 2014.

## **ARD Janet Noble**

October 2013 was a very busy month! We had the national EGA Seminar in Louisville, KY; Gary Clarke's class in Rock Hill as part of the International Teachers' Tour; and the CAR Fall Retreat in Rock Hill, SC.

I volunteered in the Book Store at the national Seminar to start getting behind-the-scenes experience for organizing and running a national Seminar. We, the Carolinas Region, will be hosting the 2017 Seminar and it's not too soon to start preparing. I asked many questions and took many notes, but I probably only glimpsed the tip of the iceberg. Fortunately, we have put together a Committee that I am very excited about – this is going to be fun!

Gary Clarke's class, *New Zealand Fan Tail Bird*, was a unique two-day class. We cut and layered multiple pieces of colored tulle between layers of sheer organza, and then used straight stitches and running stitches to create an image of the bird which looks like it is floating in air! Besides being an amazing designer and teacher, Gary was a delightful guest who helped me see our world through a completely different perspective – just try to describe root beer to someone who has never tasted it!

The Rock Hill Retreat opened with Jane Garrison describing the line of YLI silk threads (produced and distributed in Rock Hill!) and the entire Threadnuts line of over-dyed fibers and other products. In addition to getting her informative hand-outs, everyone greatly enjoyed seeing, handling, and buying these gorgeous threads. On Saturday, Cindy Valentine's class, *Felting Fantasy*, looked like a kindergarten class had exploded all over the room – there were scraps of felt, fibers, buttons, beads, and big grins everywhere! Everyone in the *Fabric Ort Box* completed at least one box and we thoroughly enjoyed our time stitching together.

During the weekend, we presented the four pieces that will be taught at Ridgecrest next spring. We will publish the flyer – with color photographs – for you within the next few weeks; hopefully you'll be able to join us from 30 May-1 Jun 2014.

Until then...Happy Stitching!  
Janet

## **Hardanger University**

February 27-March 2, 2014  
Embassy Suites, Kingston Plantation  
Myrtle Beach, SC  
[www.hardangeruniversity.com](http://www.hardangeruniversity.com)

Please join Marion Scoular, Meg Shinall and Cindy Valentine for this exciting event!

Whether you are a beginner or a skilled needleworker that wants to hone your technique, the HU class of 2014 is the retreat for you. There will be interesting lectures, classes and plenty of time to stitch, share tips and shop "designer direct." The Embassy Suites is providing a special rate, and breakfast is included.

The Thursday evening welcome reception is where you'll meet your teachers and classmates, and share a white elephant/UFO exchange. For more information, use the website above or call Cindy at 843 808 8370.

## National Board Meeting

Items from the October 2013 National Board meeting

- \*A new education catalog is planned for June 2014 as a standalone publication. Members are asked to keep it updated by using the Inside EGA insert in NeedleArts.
- \*2014 Extended Study Programs include a beading trip to Italy and a Lois Kershner class in California. More information is on the national website.
- \*Did you miss the blackwork exhibit at EGA headquarters? Don't fret. A CD is available of the entries. Each chapter can request a copy by contacting EGA headquarters.
- \*2013 Interim Report is available on the open area of the national website.
- \*EGA has received a considerable bequest from the Gay Phillips estate. A committee has been formed to oversee the use of these monies. Suggestions from the membership are welcome (and highly encouraged) as to how to best use the money for the benefit of the membership. Please send your suggestions to Brad Cape at [bcape@egausa.org](mailto:bcape@egausa.org). Even if your idea is the same as someone else, please send your thoughts also. This will let the committee know how important each idea is to the membership.
- \*Chapter officer requirements have been lowered to help the smaller chapters. Three elected officers are required to meet the minimum requirements. Officers are president, secretary, and treasurer. If secretary and treasurer are combined, a third officer must be elected. A FAQ list was in the chapter folder at the fall meeting. If you have any questions, please let me know.
- \*Thru the Needles' Eye will open April 2014 in Colorado. Carolinas Region has 7 entries vying for a spot in the exhibit.

Please feel free to contact me if you have questions or comments on any of these items.  
Elizabeth

## *Through The Needle's Eye*

Dear Members of Carolinas Region EGA

The Laurel Chapter is endeavoring to bring EGA's *Through The Needle's Eye* traveling exhibit to our region in early 2016. We have made a commitment to raise \$450 in support of this and at the CAR meeting at Rock Hill in October I proposed a motion requesting funding from the region. After discussion and a friendly amendment, \$750 was approved as funding from CAR. This leaves \$600 still to raise for the \$1800 EGA fee. The fruitful discussion made it clear that the region committee sees this undertaking as something beneficial to all CAR chapters and that every chapter should share some of the expense. Therefore we are asking you to consider contributing to the expense for bringing TNE to Carolinas Region. We are still awaiting confirmation of our venue, and I will let you know ASAP about the location.

Thank you, Rosemary Kostansek, President, The Laurel Chapter

## Chapter Fundraising Challenge

Golden Needles Chapter challenges you to help in bringing Thru the Needles' Eye to the Carolinas Region. Golden Needles will donate \$100 to the fund IF three other chapters will do the same. So other chapters, will you meet the challenge?

Golden Needles Chapter  
Concord, NC



## Regionews

The Laurel Chapter has opened negotiations with the Folk Art Center (Milepost 382 Blue Ridge Parkway, Asheville, NC) to showcase EGA's National Traveling Exhibit during the first quarter of calendar year 2016. I had the opportunity to visit the Folk Art Center this month and I am convinced this would be the perfect venue to expose as many visitors as possible to our world of needlework. To learn more about the Folk Art Center, go to <http://www.southernhighlandguild.org/pages/folk-art-center/general-info.php>.

To make this happen, we – the CAR - have to raise the money (\$1,800) to pay for the packing, shipping and insurance for the exhibit pieces. Please consider what your chapter (or you as an individual) can do to raise or donate money to cover these expenses. Contact Elizabeth Little or Janet Noble for more information.

### CATCH THE SEMINAR 2017 FEVER

The Carolina's Region will be hosting the EGA national seminar in 2017. At our fall region meeting we nominated Julie Anderson to be the director. Her name will be presented to the national board at their March 2014 meeting. Meanwhile we are working to get started with the task ahead of us. Elizabeth and Janet have been working to get the executive committee for the seminar in place. That has been accomplished with the following people agreeing to serve. Sue Osterberg, Assistant Director; Karla Gee, Dean of Faculty; Marilyn Sears, Secretary; Sydney Mace, Assistant Registrar; Becky Buie, Assistant Treasurer; and Laura Smith as our Education Exhibit Liaison. Those of you who were at the fall meeting met "Sadie Seminar 2017" and you saw that she was but a skeleton with the executive committee as her head, spine, ribs, pelvis, arms & hand, legs & feet. We need your help to bring her to life. Help us give her life by volunteering to work with us in any way you can. CATCH THE SEMINAR 2017 FEVER . Below is a list of the jobs that are in the National Seminar Guidelines. We encourage you to get involved and look for something that you would like to do to CATCH THE FEVER!

Possible opportunities to share your talents!

Angel Chair  
 Public Relations Chair  
 Signage/Certificate Chair  
 Brochure Chair  
 Handbook Chair  
 Newsletter Editor  
 Volunteer Coordinator  
 Bookstore and/or Boutique Chair  
 Promotional Sales Chair  
 Favors Chair  
 Pins Chair  
 Banquet Chair  
 Special Exhibit Chair  
 Merchandise Event Chair  
 Teacher Showcase Chair  
 Tours Chair

Some jobs might be combined, some may not be needed & some could be shared. If you think you might be interested in "catching the fever" & would like to see a job description contact Julie. If you would like to work on any of these committees, but not be chair, give us your name.

At the fall meeting we had several people volunteer and/or said that they were interested in working on: Angel Chair, Brochure Chair, Newsletter Editor and Favors Chair. That's a great start and we look forward to working with all of you.

We need you to CATCH THE SEMINAR 2017 FEVER and to help us made Sadie Seminar come to life.

Contacts: Julie Anderson [juliesurgi@gmail.com](mailto:juliesurgi@gmail.com)

Sue Osterberg [osterbed@bellsouth.net](mailto:osterbed@bellsouth.net)

Elizabeth Little [elizabethlittle@live.com](mailto:elizabethlittle@live.com)

Janet Noble [rnoble@sc.rr.com](mailto:rnoble@sc.rr.com)

## Education

1. The three **Group Correspondence Courses sponsored by the Carolinas Region for 2014** are:

- **Bargello Challenge** (go to <http://www.egausa.org/index.php/education/group-correspondence-courses/new> to see a photograph and read the details about this course)
- **Poppies** (go to <http://www.egausa.org/index.php/education/group-correspondence-courses/surface0>) and
- **Finishing with Flair** (go to <http://www.egausa.org/index.php/education/group-correspondence-courses/other>)

Members of the CAR may sign up for any of these courses and the CAR will pay the registration fee (\$175 per group) and certain postage expenses. Participants will be responsible for the cost of the instruction booklet and their own supplies. There must be a minimum of 5 students and the maximum number of students is limited to 20, so enrollment is on a 'first-come, first-served' basis.

Look for registration forms and additional information on the CAR website within the next few weeks. The **deadline for registration is 31 Jan 2014**.

2. We expect to see a **new Education Catalogue** published around June 2014. In the meantime, look for the 8-page pull-out section inside every issue of *NeedleArts* with updated information about Group Correspondence Courses. Of special note, watch for the special *Lightening Rounds* offered every quarter; these allow anyone to take a Group Correspondence course at bargain prices – the registration fee is \$30 instead of \$175! Four courses are offered as a Lightening Round every quarter – the next quarter will run 1 Dec 2013-31 Jan 2014. For more information about *Lightening Rounds*, *Flashback Lightening Rounds* and *Bonus Rounds*, go to <http://www.egausa.org/index.php/education/group-correspondence-courses/new/>

3. **CRESS Award** – Need financial help with a class or course on anything needlework-related? Consider applying for the Carolinas Region Embroidery Study Scholarship. This is a \$300 award which can be applied towards any type of class or course on embroidery during calendar year 2014 EXCEPT the National EGA Seminar or the Carolinas Region Seminar (Ridgecrest). The **deadline for applying is 1 May 2014**; go to <http://www.egacarolinas.org/education/education.htm> for more information. (CRESS co-winners for 2013 were Karla Gee and Sue Osterberg.)

4. Kudos to **Master Craftsman** Candidates for successfully moving through gates in their 6-step programs:

- Sue Osterburg – Step 4 (Beading)
- Becky Buie – Step 2 (Counted Thread) AND
- Becky Buie – Step 2 (Canvas)
- Janet Noble – Step 2 (Counted Thread)

On December 1, 2013, we have a new group of GCC Lightning Rounds that will be available through February 28, 2014:

*Bargello Challenge* by Gail Stafford

*Blue Heaven: Temari II* by Barbara Suess

*Make a Joyful Stitch* by Ilse Altherr

*Memory Book* by Cathy Trostmann

You have a very limited time (until December 31, 2013) to sign up for the following courses, as these courses will retire on December 31, 2013:

*Angelina* by Barbara Kershaw

*Chinese Checkers* by Mimi Selick

*Ikebana* by Ilse Altherr

*Japanese Temari Basics for Beginners* by Barbara Suess

*Lydia's Necessities* by Judith Gulick

*Moonlight Sonata* by Cindy Valentine

*Sashiko Plum Blossoms* by Lois Kershner

*Silk Ribbon Pond* by Kim Sanders

*Summer Dream* by Luan Callery



---

First Class Mail

RegioNews Fourth Quarter 2013  
From the Mountains to the Sea  
Elizabeth Little, RD

Sallie Folk, Editor  
422 West Pine Street  
Florence, SC 29501

[www.egacarolinas.org](http://www.egacarolinas.org)

DUES REMINDER –

Chapter treasurers and/or membership chairmen are reminded that it is time to pay Region dues for 2013. Our membership year runs from June 1 to May 31. Please remember that chapter dues must be paid in order to vote at the spring region meeting. The following was adopted at the 2012 fall meeting: “To be eligible to vote at the spring region meeting, chapter treasurers must send all dues in time for the region treasurer to receive them no later than May 15 of that year; otherwise, they should hand-deliver the dues to the treasurer prior to the start of the spring meeting.” Annual Region dues are \$4 per member. Please send your chapter dues check to me at the address listed inside

Michelle Burroughs, Treasurer  
Carolinas Region, EGA